

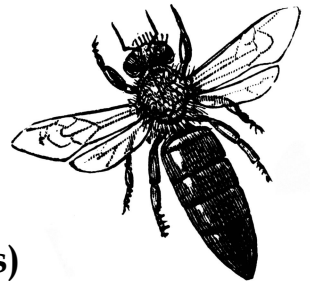
SURREY BEEKEEPERS ASSOCIATION
~ CROYDON DIVISION ~

THE CROYDON
HONEY
SHOW

Saturday 7th September 2024



at



The Selsdon Hall
(underneath Sainsburys)
Selsdon Community Centre
132 Addington Road, CR2 8LA

The Croydon Honey Show

Organised by the Croydon Division of the Surrey Beekeepers Association

Honey Show Secretary – Debbie Burney

Judge – Claire O'Brien

CUPS & AWARDS

The **Mark Stott Cup** will be awarded to the Croydon Member gaining most points in Classes 1 to 27.

The **D J Campbell Cup** will be awarded to the Croydon Member gaining most points in Classes 1 to 11.

The **Kirkup Memorial Cup** for the Surrey Beekeeping Association member gaining most points in Classes 1 to 11 other than the winner of the D J Campbell Cup.

The **N T Haines Cup** will be awarded to the Croydon Member who is a novice (one who has never won first, second or third in a honey class in a honey show) gaining most points in Class 7.

The **Mike Szilagyi Bursary** (£10) is awarded to the entrant who gains most points in the 'Six for Sale' (Class 8).

The **Collett Cup** is awarded for the best Frame for Extraction (Class 10).

The **Ellen Coates Memorial Plate** will be awarded for the best Honey Cake (Class 16).

The **Blue Ribbon or Certificate of Merit**, depending on the number of entries, for the Best Exhibit in Show.

THE ANNUAL HONEY SHOW

We are looking forward to holding our Honey Show again this year with several new classes to enter. We would like to see all members taking part - do please enter. It is fun and also instructive.

There is a novice class for new entrants and even if you have no honey or wax of your own, you can still enter Classes 15 to 27.

Have a go - join the fun

How to enter: Please read the schedule and rules carefully, since however good your exhibits, they cannot be awarded a prize if they do not comply with the stated requirements. There are three stages to your entries:

1. **Complete the online Entry Form.** Please submit your entries to the Show Secretary by the 31st August 2024. Late entries will be allowed on the day for all Classes except for Junior Beekeepers Classes 29 and 30 where special arrangements will apply.
2. **The Entry Fee** (see Rule 4) can be paid when submitting your entry form via bank transfer, and late entries by cash on the day. Labels to be attached to your entries will be supplied by the Show Secretary on the day.
3. **Stage your exhibits** by bringing them to **The Selsdon Hall** between **9.00 and 9.45am on the day of the Show**. There will be help available to stage the exhibits. You will also need to collect your exhibits at the end of the show. Consider arranging with a friend to stage and or collect each other's entries.



Scan the QR code to access
the online entry form, or visit

croydonbeekeepers.org.uk/2024-croydon-honey-show

The Show Secretary will be happy to answer
any queries you may have about the show:
contact Debbie Burney via email on
show@croydonbeekeepers.org.uk

Rules and Regulations

1. All exhibitors entering Classes 1 to 15 must be **members of the British Beekeepers Association** whose subscriptions for the current year have been paid.
2. **Entries** should be made on the online form via the CBKA website (scan the QR link), but can be printed and submitted in person if preferred and must reach the Show Secretary at least seven days before the date of the Show. Exhibitors may make more than one entry in a class but no exhibitor may take more than one prize in any one class.
3. **Late entries and alterations** may be accepted up to 9.45am on the day of the Show except for the Junior Beekeeper Classes 29 and 30 (see rule 24).
4. The **entrance fee** in all classes is 50p per exhibit, except for the Junior Beekeeper Classes which are free.
5. A **Novice** is an exhibitor who has never won a 1st, 2nd or 3rd prize in a Honey Class at any Honey Show.
6. A **Junior Beekeeper** must be aged 16 years or under on the day of the show.
7. **Labels** to be affixed to your exhibits will be supplied by the Show Secretary. For jars and bottles, the label should be fixed 12mm from the bottom of the jar or bottle. For all other entries they should be displayed per rules 15 to 24.
8. Apart from the labels supplied by the Show Secretary, **no means of identification** may be placed on, or attached to, any exhibit, with the exception of Class 8 and 22.
9. All honey and wax exhibits (Classes 1 to 15) must be **made by the exhibitor** and be from their own, or their family's bees. Class 15 may use commercially available wax sheets.
10. All exhibits will be **opened and tasted** by the Judge, or otherwise **handled and tested** as appropriate.
11. **Extracted honey** must be exhibited in clear 1lb squat round jars of British Standard pattern with standard lacquered lids, except for Class 6, 8 and 22.

12. **Clear honey** will be graded according to the British Standards Institution grading glasses which will be available to exhibitors during the staging of the exhibits.
13. **Set honey** can be naturally crystallised or creamed using either an agitation or seeding method.
14. **Chunk honey** (Class 5) is filled comb placed in a standard jar and topped up with clear honey.
15. **Cut Comb** (Class 9) are to be displayed in standard 8oz plastic containers with transparent lids. Two labels will be provided, one to be displayed on the transparent lid with the second on the front vertical face of the container.
16. **Frames for extraction** (Class 10) are to be shown in cases glazed on both sides. The frame must be easily removable from the case. Exhibitors will be issued with 2 labels, one of which should be displayed at the top of the righthand corner of the transparent face of the showcase, and the second on the top of the frame.
17. **Beeswax Cakes** (Class 12) are to be displayed on a plate and covered with a plain plastic bag, both provided by the Show Secretary. Two labels will be provided, one to be displayed on the plate and the second on the wax cake.
18. **Beeswax Blocks** (Class 13) are to be displayed on a plate and covered with a plain plastic bag provided by the Show Secretary. Seven labels will be provided, one to be attached to each Block and one on the plate.
19. **Candles** (Classes 14 and 15) are to be displayed in exhibitor's candlesticks which will not be judged. Two labels will be provided, one to be fixed to each candle or candlestick.
20. **Honey cake and biscuits** (Classes 16 and 17) are to be displayed on a plate and covered with a plain plastic bag, both provided by the Show Secretary. Two labels will be provided, one to be displayed on the plate and one on the bag.
21. **Mead** or honey wine (Classes 20 and 21) are to be exhibited in plain, colourless glass round-section shouldered bottles with punt or half punt of approximately 75cl capacity without ornament or added lettering of

any kind and with flanged stoppers. It must have been made without added sugar, but herbs or spices may be used if desired. No alcohol may be added.

22. **Display of products from the hive** (Class 22) wishes to encourage home made products from the hive which are to be attractively displayed. All containers will be opened for judging. The products should be labelled for information and honey should apply all relevant legislation for sale. Six labels will be provided, one to be attached to each of the five products and one on the display itself. Rules 8 and 11 do not apply.
23. **Photographs** (Classes 26 and 27) are to be mounted on card no greater than 254mm x 305mm with a minimum border of 25mm. Maximum print size 200mm x 250mm. Labels should be fixed on the bottom righthand side, 12mm from the edge of the card.
24. **Exhibits for the Junior Beekeepers Classes 29 and 30** are to be brought and staged at Fryland's Wood Scout Outdoor Centre, Featherbed Lane, Croydon CR0 9AA on Saturday 31st August 2024 between 9.00am to 9.45am where they will be judged. Exhibits will be restaged for display at the Honey Show on 7th September 2024. Please contact the Show Secretary to confirm staging arrangements.
25. The **Judge's decision** on the placing of exhibits shall be **final** and at his/her discretion prizes may be withheld.
26. **Points** will be awarded as follows: 1st 10 points; 2nd 7 points; 3rd 4 points; Very Highly Commended (VHC) 3 points; Highly Commended (HC) 2 points; Commended (C) 1 point.
27. **Prizes** will be awarded in each class as follows: 1st place £2.50; 2nd place £1.00; 3rd place 50p.
28. Any **objection or dispute** must be made before 2.45pm and shall be settled by the Show Committee whose decision shall be final.
29. The **decision** of the Show Committee on any matter whatsoever, under or in relation to the foregoing rules and regulations, or on any protest or objection in relation thereto or to any exhibit, shall be **final and conclusive**.

Programme

- 9.00 to 9.45am **Staging** - hand your labelled entries to a steward as early as possible between these times.
- 10.00 to 1.15pm **Judging** - members are invited to be present but must not ask the Judge or her Steward any questions or engage them in conversation unless invited to do so. Once judging has finished, the Judge encourages questions from exhibitors.
- 11am Show opens to the general public
- 3.00pm **Presentation of Cups and Awards.**
- 4.00pm Exhibits to be removed.



CROYDON
BEEKEEPERS