

SURREY BEEKEEPERS ASSOCIATION
~ CROYDON DIVISION ~

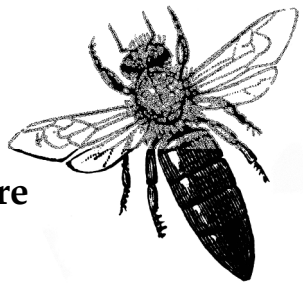
THE
HONEY
SHOW

Saturday 17th September 2022



at

The Selsdon Centre
(Sainsbury's)
Selsdon CR2 8LA



The Croydon Honey Show

Organised by the Croydon Division of the Surrey Beekeepers Association

-on-

17th September 2022

-at-

The Selsdon Centre

Selsdon

Surrey

Honey Show Secretary - Joyce Atkinson

Judge - Bill Fisher

CUPS & AWARDS

The **D J Campbell Cup** will be awarded to the Croydon Member gaining most points in Classes 1 to 10.

The **N T Haines Cup** will be awarded to the Croydon Member who is a novice (one who has never won first, second or third in a honey class in a honey show) gaining most points in Class 6.

The **Ellen Coates Memorial Plate** for the best Honey Cake (Class 19).

The **Kirkup Memorial Cup** for the SBKA member gaining most points in Classes 1 to 10 *other* than the winner of the D J Campbell Cup.

The **Mike Szilagyi Bursary** (£10) awarded to the entrant who gains most points in the "Six for Sale" class.

The **Collett Cup** awarded for the best frame for extraction.

The **Blue Ribbon** or **Certificate of Merit**, depending on the number of entries, for the Best Exhibit in Show.

Points will be awarded as follows: 1st-10pts, 2nd-7pts, 3rd-4pts, VHC-3pts, HC-2pts, C-1 pt.

(VHC = Very Highly Commended, HC = Highly Commended, C = Commended)

Prizes will be awarded in each class as follows: 1st - £1.00, 2nd - 50p, 3rd - 25p.

THE ANNUAL HONEY SHOW

We are looking forward to holding our Honey Show again this year with several new classes to enter. We would like to see all members taking part - do please enter. It is fun and also instructive.

There is a novice class for new entrants and if you have no honey of your own you can still enter Classes 19 to 23.

Have a go - join the fun.

How to enter: Please read the schedule and rules carefully, since however good your exhibits, they cannot be awarded a prize if they do not comply with the stated requirements. You need to supply three things:

1. **An Entry Form.** Please get your entry to the Show Secretary by the 9th September 2022, but failing this, bring it along with your exhibit on show day, having previously notified the Show Secretary by telephone on 0208-657-2817.
2. **The Entry Fee** (see Rule 3) should be paid when submitting your entry form. Labels will then be supplied by the Show Secretary.
3. **Your Exhibits** should be brought to The Selsdon Centre between 9.00 and 9.45am on the day of the Show. If preferred you can arrange with a friend to stage your exhibits for you.

The Show Secretary will be happy to answer any queries you may have about the show: call Joyce Atkinson on 0208-657-2817.

Rules

1. All exhibitors must be members of the British Beekeepers Association whose subscriptions for the current year have been paid. Non-members may enter Classes 13 to 30.
 2. Entries should be made on the form provided and must reach the Show Secretary at least three days before the date of the Show. Exhibitors may make more than one entry in a class but no exhibitor may take more than one prize in any one class. Late entries and alterations may be accepted up to 9.45am on the day of the Show.
 3. The entrance fee in all classes is 30p per exhibit.
 4. A Novice is an exhibitor who has never won a 1st, 2nd or 3rd prize in a Honey Class in a Honey Show.
 5. Labels are to be fixed as follows:
 - on bottles and jars, 12mm from the bottom;
 - on cut comb containers, one on the transparent lid with a duplicate on the front vertical face of the container;
 - on the frames for extraction, one at the top righthand corner of the transparent face of the showcase with a duplicate on the frame.
- Apart from the labels supplied by the Show Secretary, no means of identification may be placed on, or attached to, any exhibit, with the exception of Class 7.
6. All honey and wax produces must be made by the exhibitor or be from their own, or their family's bees.

7. **Extracted honey** must be exhibited in clear 1lb squat round jars of British Standard pattern with standard lacquered lids with either seals or wadding, except in class 7.

8. **Clear honey** will be graded according to the British Standards Institution grading glasses and a set will be available on application to the Steward between 9.00am and 10.00am on the day of the Show.

9. **Cut Comb** must be displayed in standard 8oz plastic containers with transparent lids.

10. **Combs for extraction** are to be shown in cases glazed on both sides. The comb must be easily removable from the case.

11. **Creamed honey** is crystallised honey which is warmed and agitated by using a hand creamer or skewer in an electric drill (If using the latter method ensure someone is holding the jar in a cloth and the drill is operated slowly – otherwise you may get a creamed honey kitchen!).

12. **Chunk honey** is filled comb placed in a standard jar and topped up with clear honey, ensuring no air bubbles remain.

13. **Mead or honey wine** must be exhibited in plain, colourless glass round-section shouldered bottles with punt or half punt of approximately 1/6 gallon (75cl) capacity without ornament or added lettering of any kind and with flanged stoppers. It must have been made without sugar, but herbs or spices may be used if desired. No alcohol may be added.

14. **Heaviest frames** in Class 10 will be judged on weight only.

15. If any class has less than four entries actually shown it may, at the discretion of the Show Secretary, be amalgamated with another class before judging.

16. The Judge's decision on the placing of exhibits shall be final and at his/her discretion prizes may be withheld.

17. Points will be awarded as follows: 1st - 10, 2nd - 7, 3rd - 4, Very Highly Commended - 3, HC - 2 , C - 1 point.

18. Entrants in Classes 13, 14, 15, 19, 20 & 21 may sample the winning entries subject to the consent of the winning exhibitor.

19. Any objection or dispute must be made before 2.45pm and shall be settled by the committee whose decision shall be final.

20. The decision of the committee on any matter whatsoever, under or in relation to the foregoing rules and regulations, or on any protest or objection in relation thereto or to any exhibit, shall be final and conclusive.

Programme

9.00 to 10.00am **Staging** - hand your labelled entries to a steward as early as possible between these times.

1030 to 115pm **Judging** - members are invited to be present but must not ask the Judge or his Steward any questions or engage them in conversation unless invited to do so.

3.00pm **Presentation of Cups and Awards.**

Exhibits and displays are to be removed by 4.00pm.